

BPW code number designations

Type designation, code number designation
for BPW Trailer axles and suspensions



BPW Type and code number designations

Table of contents

◎ 1.	BPW Type and code number designations.....	Page 2 - 3
1.1	Type plate	Page 3
◎ 2.	Explanation of BPW axle type codes	Page 4 - 9
2.1	Trailer axles / Steering axles	Page 4 + 5
2.2	Air suspensions	Page 6 + 7
2.3	Mechanical suspensions	Page 8 + 9
◎ 3.	Explanation of BPW code numbers	Page 10 - 14
3.1	Trailer axles and suspensions	Page 10 - 14

Valid: **1.3.2016**

This list explains the BPW type designations and the BPW code number system for BPW trailer axles, steering axles and axle suspensions.

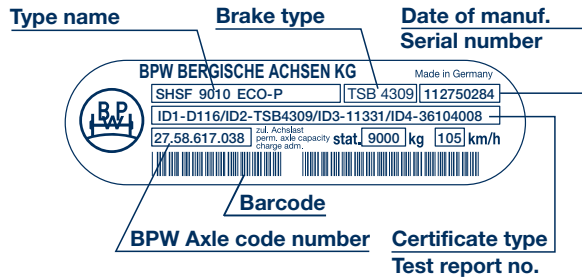
Current versions and additional information can be found online at www.bpw.de.

Subject to change (without notice).

BPW Type and code number designations 1

BPW Type plate 1.1

BPW Type plate (Adhesive type plate)



BPW Type plate ECO Plus 3



BPW Type designations

The BPW type name is composed of a letter group and a number group.

The letter group identifies the type of axle and suspension version as well as defining the hub version.

The number group specifies the axle load on the ground in kilogrammes and the number of wheel studs per wheel hub (for disc wheel connection).

The group of letters at the end of the model name defines the type of hub bearing.

You can view the brake certificate referenced by certificate type/test report number on the type plate by logging onto the BPW website at www.bpw.de (Download Centre in the German version of the website - „Bremsgutachten“).

Example:

SHSF 9010 ECO-P

- SHSF** - BPW axle series **SH** for single wheels (without offset), wheel studs M 22 x 1.5, **without** wheel nuts
- 9010** - **9000** kg axle load
- **10** wheel studs per wheel
- ECO-P** - **ECO^{Plus}** bearing generation

e.g.
D116/.../36104008 - **D116** Certificate type
 - **36104008** Test report no.

Further type plates:

Riveted type plate



Exec. prior to 1981



Exec. prior to 1999

Adhesive type plate



Exec. prior to 2/2004



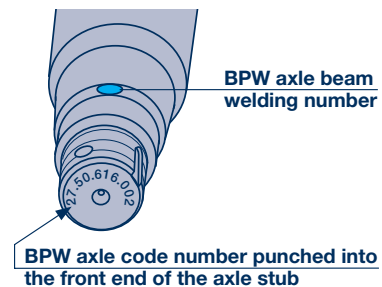
Exec. prior to 10/2006

The BPW axle code number is shown on the type plate.

If this is missing or no longer legible, the BPW axle number can be read off the front end of the axle stub in most cases.

In steering axles and ECO Plus 2 bearings, there is no code number embossed on the front end of the stub.

From June 2012, the axle beam welding number will now be stamped onto the axle stub on the front.



Where the axle beam welding number is indicated, the axle can also be identified. See also BPW Internet application for spare part lists for commercial vehicles.

2 Explanation of BPW axle type codes

2.1 Trailer axles / Steering axles (extract)

Example:											
H	S	F	A	H	LL	9010	12°	ECO Plus 2			
		Axle series		Axle beam		Brake		Tyre		Year of manuf.	
E											
EH										- 1981	
H									SN 420	20 - 24"	
R										1982 -	
M										1982 -	
KH										1988 -	
KM									SN 360	19.5"	
KR										1985 -	
KRD										1985 -	
NH										1993 -	
NR									SN 300	15/17.5"(12")	
NRD										1982 -	
NM										1982 -	
SH									SB 4345	20 - 24"	1996 - 2010
									SB 4309	22.5"	2003 - 2010
									TSB 4312	20 - 24"	2010 -
									TSB 4309	22.5"	2010 -
SKH									SB 3745	19.5"	1998 - 2010
									TSB 3709	19.5"	2010 -
SKM									SB 3745	19.5"	1998 - 2010
									TSB 3709	19.5"	2010 -
ZR									SN 300	15/17.5"(12")	1967 - 1982
ZZ											(- 1982)
Wheel execution											
B											for single wheels, wheels with offset
S											for single wheels, wheels without offset
Z											for twin wheels
I											Wheel spiders for Trilex wheel rims; single wheels
IZ											Wheel spiders for Trilex wheel rims; twin wheels
F											Wheel studs M 22x1.5 without wheel nuts; order wheel nuts for stud or spigot alignment separately
M											for spigot alignment / Alloy wheels

Explanation of BPW axle type codes **2**

Trailer axles / Steering axles (extract) **2.1**

Example:									
H	S	F	A	H	LL	9010	12°	ECO Plus 2	
			A						with alloy hub
				(D)					(German „Dauerbremse“ approval StVZO regulation 41 para 14) - 1990
				H					for hanging boosters
					L				Power steering axle Steering angle max. 40°
					LL				Self steering axle, series LL Steering angle max. 27°
					LS				Self steering axle, series LS Steering angle max. 20°
					P				Swivel axle
					ST				Stub axle
						6006 to 20010			Axle load + quantity of wheel studs per hub
							-15		Axle beam-wall thickness, e.g. 15 mm
							-1		Type of hub bearing (e.g. 14t)
							/3		Wheel connection - 10 wheel studs, pitch circle 335 mm (only K..)
							/12° to /40°		Steering angle of steering axle
									Hub bearing execution
								ECO	BPW trailer axle with ECO Unit
								ECO-MAXX	Weight-optimised BPW trailer axle with ECO Unit
								ECO^{Plus}	Weight-optimised BPW trailer axle with ECO ^{Plus} Unit
								ECO Plus 2	Weight-optimised BPW trailer axle with ECO Plus 2 Unit, 2007 -
								ECO Plus 3	Weight-optimised BPW trailer axle with ECO Plus 3 Unit, 2015 -
								MAXX	Weight-optimised BPW trailer axle with conv. hub bearing system

2 Explanation of BPW suspension type codes

2.2 Air suspensions (extract)

Example:										
HSF	ALO	A	LL	3/	9010	/12°	E	F30	ECO Plus 2	
H..										
K..										
N..										see explanation of axle type codes page 4 / 5
a.o.										
										Air suspension series
										Ride-height
O										O straight overslung trailing arm 490 - 500
OM										OM cranked overslung trailing arm 370 - 470
OMN										OMN cranked overslung trailing arm 355
OMT										OMT cranked underslung trailing arm 290
OT										OT Underslung trailing arm 220 - 360
SLO										SLO straight overslung trailing arm 420 - 490
SLM										SLM cranked overslung trailing arm 360 - 440
SLU										SLU Underslung trailing arm 220 - 330
ALO										ALO straight overslung trailing arm 380 - 490
ALM										ALM cranked overslung trailing arm 305 - 420
ALMT										ALMT cranked overslung trailing arm 245 - 290
ALU										ALU Underslung trailing arm 175 - 300
DLU										DLU Air bags above trailing arm 260 - 330
ACAU										ACAU ECO Air COMPACT 205 - 350
ACAM										ACAM 245 - 370
ACAO										ACAO 335 - 385
ACBU										ACBU 260 - 330
ACBM										ACBM 300 - 425
ACBO										ACBO 330 - 510
VO										VO Two-fold bellows
	A									with axle lift device
	R									with frame (= ride hight + 100 mm)
	U									with U-stabilizer
		L								with power steering axle, series L Steering angle max. 40°
		LL								with self steering axle, series LL Steering angle max. 27°
		LS								with self steering axle, series LS Steering angle max. 20°
			-							Single axle
			2/							Tandem axle suspension
			3/							Tri-axle suspension
				6006 to 13010						Axle load + quantity of wheel studs per hub
					/12° to /40°					Steering angle of steering axle

Explanation of BPW suspension type codes **2**

Air suspensions (extract) **2.2**

Example:										
HSF	ALO	A	LL	3/	9010	/12°	E	F30	ECO Plus 2	
										Execution hanger brackets
A										Alloy hanger bracket
C										With C-beam
D										Hanger bracket with top plate
E										Hanger bracket without top plate
K										Bolt-on bracket
S										Taper mounted hanger brackets (70 mm wide)
T										with beam (draw axle)
V										Adjustable hanger bracket
X										Stainless steel hanger bracket
Y										Without mounted hanger brackets, hanger brackets separate
										Air bag execution
30										Air bag Ø 300 mm, for stroke 200 mm (normal)
30-1										Ø 300 mm, for stroke up to 340 mm
30 K										Ø 300 mm, for stroke 150 mm
36										Ø 360 mm, for stroke 200 mm (normal)
36-1										Ø 360 mm, for stroke up to 340 mm
36-2										Ø 360 mm, for stroke up to 450 mm
36 K										Ø 360 mm, for stroke 180 mm
F30										Ø 300 mm, central on the trailing arm
G										Air bag with split piston
Z										Air bags loose, separately
										Hub bearing execution
ECO										BPW trailer axle with ECO Unit, 1996 (1998) -
ECO-MAXX										Weight-optimised BPW trailer axle with ECO Unit, - 2003
ECO^{Plus}										Weight-optimised BPW trailer axle with ECO ^{Plus} Unit , 2003 -
ECO Plus 2										Weight-optimised BPW trailer axle with ECO Plus 2 Unit, 2007 -
ECO Plus 3										Weight-optimised BPW trailer axle with ECO Plus 3 Unit, 2015 -
MAXX										Weight-optimised BPW trailer axle with conv. hub bearing system

2 Explanation of BPW suspension type codes

2.3 Mechanical suspensions (extract)

Example:										
HSF	VB	U	LL	3/	9010	/12°	M	ECO Plus 2	ECO Cargo	
H..										
K..										
N..										see explanation of axle type codes page 4 / 5
a.o.										
										Suspension series
VA										VA Mechanical suspension with leaf springs mounted on movable bearings, with mechanical braking load compensation
VB										VB Mechanical suspension without braking load compensation, leaf springs above the axle
VBN										VBN Mechanical suspension without braking load compensation, leaf springs above the axle, low design
VBT										VBT As above, but leaf springs below the axle
VG										VG Mechanical suspension without braking load compensation, leaf springs above the axle, with cast supports
VGT										VGT As above, but leaf springs below the axle
VK										VK Mechanical suspension with mechanical braking load compensation via torque arm arrangement on the equalizer, leaf springs above the axle
VKT										VKT As above, but leaf springs below the axle
VH										VH Suspension with hydraulic braking load compensation and optional auxiliary pneumatic springs, leaf springs above the axle.
VHT										VHT As above, but leaf springs below the axle
VN										VN Mechanical suspension with mechanical braking load compensation via pull rods
SS										SS Schmitz self-tracking suspension system
W										W Tandem axle assembly, rigid, with two-leaf springs and support axle, bearing blocks between the leaf springs
BW										BW Tandem axle assembly, rigid, with two-leaf springs and support axle, bearing blocks above the leaf springs, with bronze bushes
GW										GW Tandem axle assembly, rigid, with two-leaf springs and support axle, bearing blocks above the leaf springs, with rubber bushes
U										with U-stabilizer
Q										with rectangular section stabilizer
L										with power steering axle, series L Steering angle max. 40°
LL										with self steering axle, series LL Steering angle max. 27°
LS										with self steering axle, series LS Steering angle max. 20°
-										Single axle
2/										Tandem axle suspension
3/										Tri-axle suspension
6006 to 20010										Axle load + quantity of wheel studs per hub
/12° to /40°										Steering angle of steering axle

Explanation of BPW suspension type codes **2**

Mechanical suspensions (extract) **2.3**

Example:										
HSF	VB	U	LL	3/	9010	/12°	M	ECO Plus 2	ECO Cargo	
									Exec. index	
							B		B	reinforced
							BE		BE	reinforced, equalizer bearing with bronze bushes
							C		C	
							HD		HD	Heavy-Duty-execution
							HDE		HDE	Heavy-Duty-execution, equalizer bearing with bronze bushes
							E		E	Equalizer bearing with bronze bushes
							K		K	
							KE		KE	Equalizer bearing with bronze bushes
							KN		KN	low design
							L		L	reinforced
							LE		LE	reinforced, equalizer bearing with bronze bushes
							M		M	reinforced
							ME		ME	reinforced, equalizer bearing with bronze bushes
							MN		MN	reinforced, low design
							MNE		MNE	reinforced, low design equalizer bearing with bronze bushes
									Hub bearing execution	
							ECO		BPW trailer axle with ECO Unit, 1996 (1998) -	
							ECO-MAXX		Weight-optimised BPW trailer axle with ECO Unit, - 2003	
							ECO^{Plus}		Weight-optimised BPW trailer axle with ECO ^{Plus} Unit, 2003 -	
							ECO Plus 2		Weight-optimised BPW trailer axle with ECO Plus 2 Unit, 2007 -	
							ECO Plus 3		Weight-optimised BPW trailer axle with ECO Plus 3 Unit, 2015 -	
							MAXX		Weight-optimised BPW trailer axle with conv. hub bearing system	
							ECO Cargo		Running gear system as from 2013	

3 Explanation of BPW code numbers

3.1 Trailer axles and suspensions (extract)

Example:					
30.	38.	743.	000		
61.	38.	441.	001		
		1st + 2nd digit	Wheel brake		
		Axle execution	Suspension execution	Drum	Disc
20.		Single axle without suspension parts		all	-
20.		Rigid axle, ECO Plus 3, 2015 -		all	all
21.			Single axle with suspension parts	all	-
21.		Rigid axle, solid, ECO Plus 3, 2015 -		all	all
22.			Tandem axle suspension	all	-
22.		Axle stub, ECO Plus 3, 2015 -		all	all
23.			Tri-axle suspension	all	-
23.		Swivel axle, ECO Plus 3, 2015 -		all	all
24.		Single axle without suspension parts		all	all
25.		Single axle without suspension parts		all	all
26.		Steering axle without suspension parts		all	all
27.		Single axle without suspension parts		all	all
28.			Single axle with suspension parts	all	all
29.			Tri-axle suspension	all	-
29.		Steering axle, ECO Plus 3, 2015 -		all	all
30.		Single axle without suspension parts	Single axle with suspension parts	all	-
31.		Single axle without suspension parts		all	-
32.			Tandem or tri-axle suspension	all	-
33.			Tandem-Swivel axle / Tandem or tri-axle suspension	all	-
34.		Swivel axle		all	-
35.		Stub axle		all	-
36.		Steering axle without suspension parts		all	-
38.		Single axle with monted brake cylinders	Single axle with suspension parts without air bags, air bags loose, separately / VB-single axle	all	-
39.			Tri-axle axle air suspension / Tandem or tri-axle suspension	all	Ø 430
61.			Single axle with suspension parts	SN 420	Ø 430
62.			Tandem axle air suspension	SN 420	Ø 430
63.			Tri-axle axle air suspension	SN 420	Ø 430
64.			Single axle with suspension parts	SN 360	Ø 370
65.			Tandem axle air suspension	SN 360	Ø 370
66.			Tri-axle axle air suspension	SN 360	Ø 370
67.			Single axle with suspension parts	SN 300	-
68.			Tandem axle air suspension	SN 300	-
69.			Tri-axle axle air suspension	SN 300	-
70.			Mechanical suspension (VB + W) with ECO Plus 3 unit, 2015 -	all	all
71.			Modul without hanger bracket and air bag (ECO Air COMPACT)	SN 420	Ø 430
74.				SN 360	Ø 370
77.				SN 300	-
72.			Modul with hanger bracket and without air bag (ECO Air COMPACT)	SN 420	Ø 430
75.				SN 360	Ø 370
78.				SN 300	-
73.			Modul with hanger bracket and air bag + Tandem or tri-axle suspension (ECO Air COMPACT)	SN 420	Ø 430
76.				SN 360	Ø 370
79.				SN 300	-
98.			Suspension parts, air suspension parts without axles		
99.			Suspension parts, air suspension parts without axles		

Explanation of BPW code numbers **3**

Trailer axles and suspensions (extract) **3.1**

Example:								
30.	38.	743.	000					
61.	38.	441.	001					
				3rd + 4th digit				
				Axle load	Roller bearings	Axle series	Year of manuf.	Remark
06.				6500 kg	33116 / 32310	H.. / K.. / N..	1982 -	Conv. bearing
08.				8000 - 9000 kg	33116 / 32310	H.. / K.. / N..	1982 -	
09.								
10.				10000 - 12000 kg	33118 / 33213	H.. / K.. / N..	1982 -	
14.				13000 - 14000 kg	32219 / 33215	H.. / K.. / N..	ab 1983	
16.				16000 - 18000 kg	32222 / 32314	H..	ab 1983	
20.				20000 kg	32224 / 32316	H..	ab 1983	ECO / ECO-MAXX Unit
36.				6500 kg	33116 / 32310	H.. / K.. / N..	ab 1991 (ab 1992)	
37.				8000 - 9000 kg	33116 / 32310	H.. / K.. / N..	ab 1991 (ab 1992)	
38.								
39.								
40.				10000 - 12000 kg	33118 / 33213	H.. / K.. / N..	ab 1991 (ab 1992)	
41.								ECOPlus Unit
44.				13000 - 14000 kg	32219 / 33215	H..	ab 1994	
46.				6500 kg	33118 / 33213	H..	ab 2003	
48.				8000 - 9000 kg	33118 / 33213	H.. / SH.. / KH.. / SKH..	ab 2000	
49.								
50.				10000 - 12000 kg	33118 / 33213	H.. / SH.. / KH.. / SKH..	ab 2000	
51.								ECO Plus 2 Unit
56.				6500/7000 kg	33118 / 33213	H.. / NH..	ab 2007	
57.				8000 - 9000 kg	33118 / 33213	H.. / SH.. / KH.. / SKH.. / NH..	ab 2007	
58.								Conv. bearing
59.								
64.				6000 kg	30313 / 32309	EH..	- 1980	
65.				6400 kg	33215 / 32310	KR..	1985 -	
				6500 kg	33215 / 32310	EH..	1980 - 1982	
66.				6500 kg	33118 / 33213	ECO Plus 3	2015 -	ECO Plus 3 Unit
68.				9000 kg	33118 / 33213	ECO Plus 3	2015 -	
68.				7250 kg	30315 / 32310	EH..	- 1964	Conv. bearing
69.				8000 kg	30315 / 32310	EH..	- 1967	
71.				10000 kg	30317 / 30314	EH..	- 1967	
72.				12000 kg	33118 / 33213	EH.. 12000-2	1977 - 1982	
					32219 / 33215	EH.. 12000-1	- 1983	
					32222 / 32314	EH.. 12000	- 1983	
					32219 / 33215	ZZ.. 12010-1	- 1983	
73.				13000 / 14000 kg	32219 / 33215	EH.. 14000-1	- 1983	
						ZR.. 13000	- 1983	
74.				14000 kg	32222 / 32314	EH..	- 1983	
75.				30000 kg	32228 / 32318	M..		
76.				9000 kg	33215 / 32310	EH.. / ZR..	1967 - 1982	
80.				11000 kg	33217 / 33213	EH..	1966 - 1982	
81.				7350 kg	7350 kg	EH..	1964 - 1967	
83.				6000 kg (6300 kg)	33213 / 33209	ZR..	1967 - 1983	
84.				7350 kg	33215 / 32310	EH..	1967 - 1982	
85.				8000 kg	33215 / 32310	EH.. / ZR..	1967 - 1982	
86.				10000 kg	33217 / 33213	EH.. / ZR..	1966 - 1982	
87.				20000 kg	32224 / 32316	EH..	- 1983	
89.				16000 kg	32222 / 32314	EH..	- 1983	

3 Explanation of BPW code numbers

3.1 Trailer axles and suspensions (extract)

Example:			
30.	38.	743.	000
61.	38.	441.	001
		5th + 6th digit (Ref. number 7...)	
01.		Designation trailing guide and air bag beam (ECO Air COMPACT)	
02.			
03.			
04.			
05.			
06.			
		5th + 6th digit (ECO Plus 3)	
		Wheel brake	Dimensions
00.		without brake	
10.		SN 3015	closed Ø 300 x 150
11.		SN 3020	closed Ø 300 x 200
20.		SN 3620	closed Ø 360 x 200
30.		SN 4212	closed Ø 420 x 120
31.		SN 4218	closed Ø 420 x 180
32.		SN 4220	closed Ø 420 x 200
40.		TSB 3709	Ø 370
41.		TSB 4309	Ø 430
		5th - 7th digit (Ref. number 2... / 3... / 6...)	
001.	to	Premounted air suspension axle without hanger brackets and air bags	
099.		in the case of ref. number 61.xx.xxx.xxx - 69.xx.xxx.xxx	
		e.g. .0xx. = Premounted air suspension axle	
		.x51. = Premounted air suspension axle with trailing arm 05.082.13.51.0	
220.	to	Designation of ride height and air bag version 220 to 509	
509.		in the case of ref. number 61.xx.xxx.xxx - 69.xx.xxx.xxx	
		e.g.	
		.22x. = 220 mm ride height	
		.44x. = 440 mm ride height	
		Air bag type:	
		.xx0. = BPW 30 (Ø 300 mm)	
		.xx1. = BPW 36 (Ø 360 mm)	
		.xx2. = BPW 36-1 (Ø 360 mm)	
		.xx3. = BPW 30-1 (Ø 300 mm)	
		.xx4. = BPW 30 K (Ø 300 mm)	
		.xx5. = BPW 36 K (Ø 360 mm)	
		.xx6. = BPW 36-2 (Ø 360 mm)	
		.xx9. = BPW 30 / 36 lose separat	
101.	to	Designation of wheel brake in the case of ref. number 20. - 39...	
125.		see pages 13 / 14	
501.	to		
839.			

Explanation of BPW code numbers **3**

Trailer axles and suspensions (extract) **3.1**

Example:								
30.	38.	743.	000					
61.	38.	441.	001					
		5th - 7th digit						
		Wheel brake	Dimensions	Execution	Brake lining	Year of manuf.		
101. to 108.		SN 4216	Ø 420 x 160	Alloy brake shoes	18 mm	- 1974		
109. to 116.		SN 4218	Ø 420 x 180	Alloy brake shoes	18 mm	- 1974		
117. to 125.		SN 4220	Ø 420 x 200	Alloy brake shoes	18 mm	- 1974		
500.		SN 3010	closed Ø 300 x 100	Brake shoes with splitted roller (BPW 95)	18 mm	1995 -		
501.		SN 3015	closed Ø 300 x 150		18 mm	1995 -		
502.		SN 3020	closed Ø 300 x 200		18 mm	1995 -		
505.		SN 3015 HWG	open Ø 300 x 150					
511.		SN 3015 KWG	closed Ø 300 x 150	Alloy brake shoes	13 mm 18 mm	1966 - 1973 1973 - 1978		
512.		SN 3015 HWG	closed Ø 300 x 150					
513.		SN 3015 KWG/BA	closed Ø 300 x 150					
518.		SN 3020 KWG	open Ø 300 x 200					
519.		SN 3020 HWG	open Ø 300 x 200					
525.		SN 3020 KWG	closed Ø 300 x 200					
526.		SN 3020 HWG	closed Ø 300 x 200					
532.		SN 5020 HWG	closed Ø 500 x 200				18 mm	
542.		SN 3616	closed Ø 360 x 160		Quick-release brake shoes wedge plates		18 mm	1985 -
545.		SN 3620 KWG	closed Ø 360 x 200					
546.		SN 3620 HWG	closed Ø 360 x 200					
551.		SN 3616 BPW 95	closed Ø 360 x 160	Brake shoes with splitted roller	18 mm	1995 -		
552.		SN 3620 BPW 95	closed Ø 360 x 200		18 mm	1995 -		
581.		SN 3015-1 KWG	closed Ø 300 x 150	Brake shoes with closed anchor eye	18 mm	1978 - 1989		
582.		SN 3015-1 HWG	closed Ø 300 x 150					
583.		SN 3015-1 KWG/BA	closed Ø 300 x 150					
584.		SN 3015-1 HWG/BA	closed Ø 300 x 150					
585.		SN 3020-1 KWG	closed Ø 300 x 200					
586.		SN 3020-1 HWG	closed Ø 300 x 200					
587.		SN 3020-1 HWG/BA	closed Ø 300 x 200					
588.		SN 3020-1 KWG	open Ø 300 x 200					
589.		SN 3020-1 HWG	open Ø 300 x 200					
592.		SN 3015 HWG	closed Ø 300 x 150	Quick-release brake shoes	18 mm	1990 -		
596.		SN 3020 HWG	closed Ø 300 x 200					
609.		SB 4345	Ø 430	Disc brake		1996 - 2003		
610.		SB 3745	Ø 370					
612.		SB 3745	Ø 370					
613.		SB 4309	Ø 430					
614.		SB 4345	Ø 430					
616.		TSB 3709	Ø 370	BPW ECO Disc		2010 -		
617.		TSB 4309	Ø 430					
618.		TSB 4312	Ø 430					

Definition			
SN	S-cam shaft	HWG	half-size brake camshaft
SB	Disc brake	KWG	short brake camshaft
TSB	BPW ECO Disc Trailer Disc brake	BA	with brake equalization

3 Explanation of BPW code numbers

3.1 Trailer axles and suspensions (extract)

Example:			
30.	38.	743.	000
61.	38.	441.	001
5th - 7th digit			
		Wheel brake	Dimensions
			Execution
			Brake lining
			Year of manuf.
709.		SN 4218-2 KWG	open Ø 420 x 180
710.		SN 4218-2 HWG	open Ø 420 x 180
713.		SN 4218-2 KWG	closed Ø 420 x 180
714.		SN 4218-2 HWG	closed Ø 420 x 180
717.		SN 4220-2 HWG	open Ø 420 x 200
718.		SN 4220-2 HWG	open Ø 420 x 200
722.		SN 4220-2 KWG	closed Ø 420 x 200
723.		SN 4220-2 HWG	closed Ø 420 x 200
739.		SN 4222-2 HWG	closed Ø 420 x 220
741.		SN 4212	closed Ø 420 x 120
742.		SN 4216	closed Ø 420 x 160
743.		SN 4218	closed Ø 420 x 180
744.		SN 4220	closed Ø 420 x 200
745.		SN 4222	closed Ø 420 x 220
790.		SN 4212-2 HWG	open Ø 420 x 120
792.		SN 4212-2 HWG/BA	open Ø 420 x 120
793.		SN 4212-2 KWG	closed Ø 420 x 120
794.		SN 4212-2 HWG	closed Ø 420 x 120
796.		SN 4212-2 HWG/BA	closed Ø 420 x 120
802.		SN 4216-1 HWG	open Ø 420 x 160
806.		SN 4216-1 HWG	closed Ø 420 x 160
809.		SN 4218-1 KWG	open Ø 420 x 180
810.		SN 4218-1 HWG	open Ø 420 x 180
813.		SN 4218-1 KWG	closed Ø 420 x 180
814.		SN 4218-1 HWG	closed Ø 420 x 180
817.		SN 4220-1 KWG	open Ø 420 x 200
818.		SN 4220-1 HWG	open Ø 420 x 200
822.		SN 4220-1 KWG	closed Ø 420 x 200
823.		SN 4220-1 HWG	closed Ø 420 x 200
839.		SN 4222-1 HWG	closed Ø 420 x 220
889.		SN 4212-1 KWG	open Ø 420 x 120
890.		SN 4212-1 HWG	open Ø 420 x 120
893.		SN 4212-1 KWG	closed Ø 420 x 120
894.		SN 4212-1 HWG	closed Ø 420 x 120
896.		SN 4212-1 HWG/BA	closed Ø 420 x 120
7th - 10th digit (Ref. number 7... + ECO Plus 3)			
0000 to 9999	Consecutive number 0000 - 9999		
8th - 10th digit			
000 to 999	Consecutive number 000 - 999		

Definition			
SN	S-cam shaft	HWG	half-size brake camshaft
SB	Disc brake	KWG	short brake camshaft
TSB	BPW ECO Disc Trailer Disc brake	BA	with brake equalization



BPW-Sachnr. 39341601e

BPW is a globally leading manufacturer of intelligent running gear systems for trailers and semi-trailers. As an international mobility and system partner, we offer a wide range of solutions for the transport industry from a single source, from axle to suspension and brake to user-friendly telematics applications.

We thereby ensure outstanding transparency in loading and transport processes and facilitate efficient fleet management. Today, the well-established brand represents an international corporation with a wide product and service portfolio for the commercial vehicle industry. Offering running gear systems, telematics, lighting systems, composite solutions and trailer superstructures, BPW is the right system partner for automotive manufacturers.

BPW, the owner-operated company, consistently pursues one target: To always give you exactly the solution which will pay off. To this end, we focus our attention on uncompromising quality for high reliability and service life, weight and time-saving concepts for low operating and maintenance costs as well as personal customer service and a close-knit service network for quick and direct support. You can be sure that with your international mobility partner BPW, you always use the most efficient method.

Your partner on the path to economic viability



BPW Bergische Achsen Kommanditgesellschaft

Postbox 12 80 · 51656 Wiehl, Germany · Phone +49 (0) 2262 78-0
info@bpw.de · www.bpw.de